

Smart Mobile Terminal

SUNMI V3 MIX

MIX, the all-in-one enterprise tablet.

Powered by
SUNMI OS

Compatible with
SUNMI DMP

MIX your POS terminal to
capture businesses anywhere, anytime.

10" high-resolution display and a built-in high speed printer
make a mobile and desktop terminal.

MIX, design not only for payment.

Ergonomically designed for a comfortable grip. Professional scanner
integrated 1D/2D barcode scanning. Aluminum-magnesium alloy frame
and incell touchscreen make it strong yet slim and light.

*All Pictures shown are for illustration purpose only, actual product may vary.

MIX for higher performance.

Qualcomm hexa-core processor and 4GB RAM+32GB ROM for an assured
strong performance.

MIX for wider extensibility.



Specially designed rotatable functional cradle enable cash drawer,
handheld scanner and network among other accessories that boost your business.
*Both rotatable cradle and non-rotatable cradle options are available.



Built-in high speed
thermal printer



Professional scanner
integrated 1D/2D barcode
scanning supported.



NFC reader



SUNMI V3 MIX Application Scenario



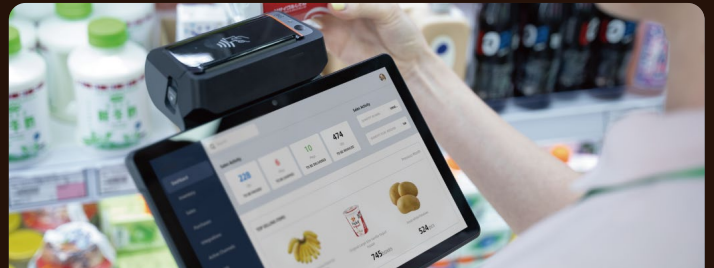
Tableside Ordering



One-on-one Service



Drive Thru



Inventory Check

SUNMI V3 MIX Tech Specs

General Configuration

Product Model T5701 58mm version T5711 80mm version	OS SUNMI OS 4.0 (based on Android 13)	Processor Qualcomm hexa-core 2.4/2.0GHz	Memory 4GB RAM+32GB ROM	Display 10.1" HD 1280*800 IPS
Battery Removable Lithium battery 7.2V/2600mAh	Camera Front 2MP FF QR Payment 0.3MP FF	Scanner 2D professional scanner	Wi-Fi Supports IEEE 802.11 a/b /g/n/ac 2.4G/5G	Speaker 1.2W
Bluetooth BT2.1/3.0/4.2, supports BLE	Button Power Key, Volume Key and Scan Key	GPS GPS, AGPS	NFC Reader Type A&B card Mifare card, FeLica card ISO/IEC 14443 and ISO 15693 compliant	PSAM Card Slot PSAM Card slot, complies with ISO7816 standard, 1.8V/3.0V
SIM Card Slot Dual Nano SIM Card slot, Support 1.8V/3.0V	SD Card Slot MicroSD *1	Fingerprint Only for login (Optional)	Power Adapter Input: AC100-240V, Output: 5V/2A	Dimensions (L*W*H) 246*231*73mm
Weight 670g(58mm)/710g(80mm)	Cradle (Optional) For charging, 3*USB Type A, RJ11, RJ45	Cradle Customer Display (Optional) USB 6.7" touchscreen	Environment Operating temperature: 0°C~45°C (except 3D camera) Storage temperature: -20°C~60°C	

58mm version

80mm version

Printer

Thermal Printer, Print speed: 70mm/s
 Paper Roll Width / Diameter: 58mm/ 40mm

Thermal Printer, Print speed: 70mm/s
 Paper Roll Width / Diameter: 80mm/ 40mm

1.All specifications are subject to change without (prior) notice.