

RFID Proximity Readers
with MSR ABA TK2 Emulation

PROMAG™

DC 5V
0-35°C
-25 - 55°C

Power Requirements
Operation Temperature
Storage Temperature

PCR Series RFID Proximity Readers with MSR ABA TK2
emulation can read RFID cards and send out the data with
MSR ABA TK2 format. It can simply replace the Mag-Stripe



PCR262 / PCR940 / PCR941

RFID Proximity Readers with MSR ABA TK2 Emulation

Introduction:

PCR Series RFID proximity Readers with MSR ABA TK2 emulation can read RFID cards and send out the data with MSR ABA TK2 format. It can simply replace the Mag-stripe reader in your existing systems and no circuit change nor firmware change is needed. PCR Series are equipped with two I/O interfaces, MSR IN and PCR OUT. This feature makes it possible that you may install the Proximity reader to your system in addition to the existing Mag-stripe reader if you would like to use both PCR and MSR on your system.

Features:

- ☆ **MSR ABA TK2 emulation interface, totally compatible with TTL output ABA TK2 standard Mag-stripe reader**
- ☆ **Equipped with two I/O interface, MSR IN & PCR OUT**
- ☆ **Can simply replace Mag-stripe reader**
- LED indicator to show operation status
- Audible beeper to show reading status
- Can be installed on metal surfaces, walls and doors

Applications:

- Access Controls
- Time & Attendance
- Personal Identification Systems
- Parking Systems
- Security Systems

Specifications:

Power Requirements	DC 5V
Operation temperature	0 ~ 55° C
Storage temperature	-25 ~ 65° C
Humidity	5 ~ 95 % relative
Interface	TTL / MSR ABA TK2
Read range	PCR262: about 5 ~ 10 cm PCR941: about 5 ~ 12 cm PCR940: about 5 ~ 20 cm
Frequency	PCR262 & PCR941: 125 KHz, ASK PCR940: 134.2 KHz, FSK
Format	PCR262 & PCR941: 64 bits, Manchester coding, EM format PCR940: TIRIS format
Data capacity	PCR262: 40 bits, 10 digits Hex PCR941: 40 bits, 10 digits Hex PCR940: 64 bits, 16 digits Hex
Dimensions	PCR262: H102 x W42 x D27.5 mm PCR94x: H85 x W80 x D25 mm

Ordering information:

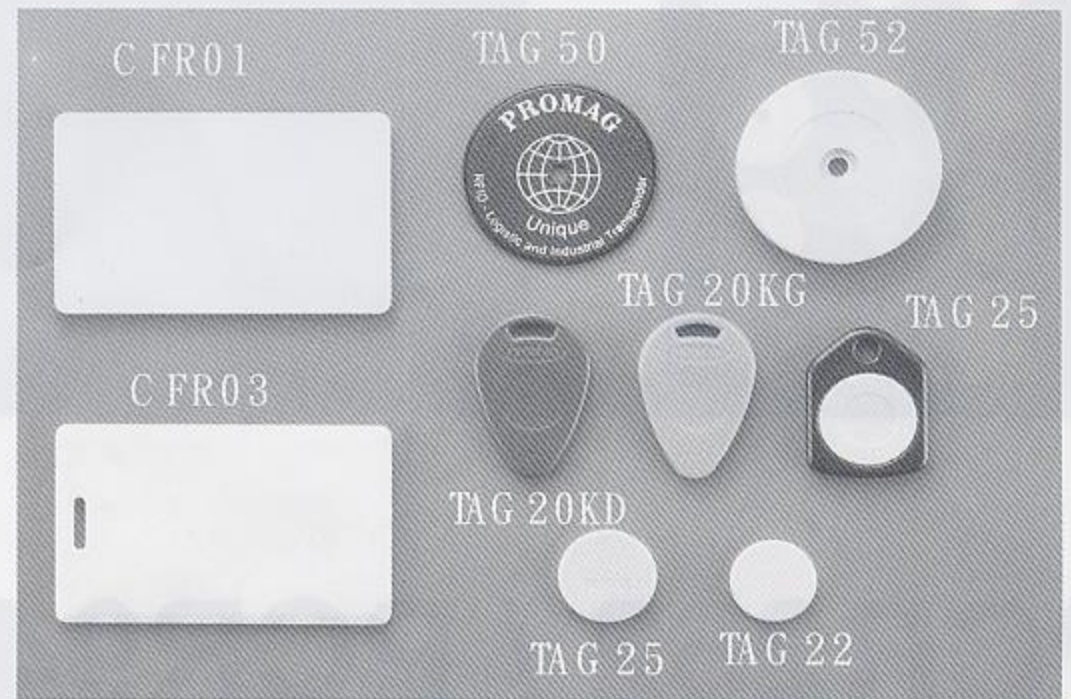
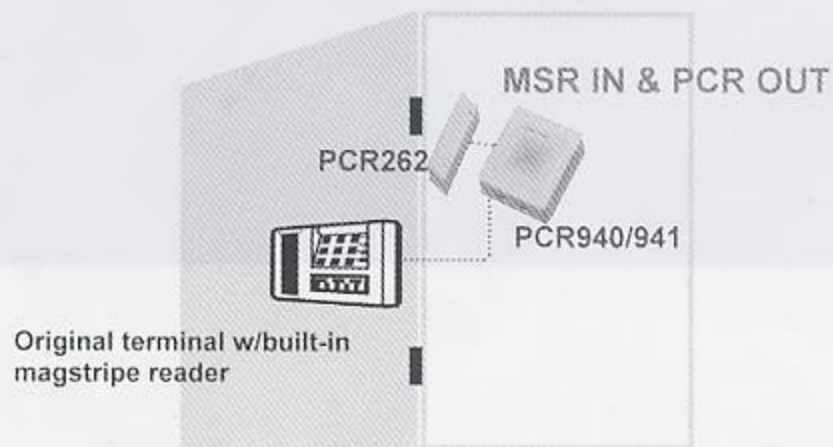
- PCR262: 125 KHz, EM technology, small footprint
- PCR941: 125 KHz, EM technology
- PCR940: 134.2 KHz, TIRIS technology

Transponders:

- CFR01: ISO card EM format for PCR262 / PCR941
- CFR03: 2 mm thick EM format for PCR262 / PCR941
- CFR02: 1.6 mm thick TIRIS format for PCR940

※ Specification is subject to change without notice.

Simply to replace your
Magstripe reader existing system



VIC COMPUTER (HK) CO., LTD.
域士電腦(香港)有限公司
Tel: (852) 2725 1612
Fax: (852) 2725 0766
Email: Sales@VIC.HK
http://VIC.HK